

# DISCOVER

*(Bible Ralchhan)*

Zirlai - 13  
Misual Mithianghlima Channa

**K**ut zungtang thla a awm lova. Hmanrua hnutchhiah a awm bawk hek lo. Tumahin rilru lam thiam mi, Michael Phillipsa pisaa lut an hmu lova. Tuman silai ri an hre bawk hek lo. Nimahsela Dr Phillips chu a

dawhkân phena thi zangphar der hian an hmu a. A kawr hâk chu silaimu pangâin a lo kâptlang a.

Rêl lâwk sa ang thlapa tih niin a lang. Atîrah chuan hnuchhui mite pawhin engmah an man chhuak thei hek lo. Amaherawhchu Dr. Phillip-a a dawhkân chung a pencil dahna chu thîrzaî sintê hian a zawm tih an hmu ta a. Chu thîrzaî chuan dawhkân pawhdawh chhûnga Tape Recorder chu a lo zawm a. Pencil dahna chuan ÷awnggrinna chu a lo hliah a ni tih an hmu chhuak ta a ni.

Hnuchhuitute chuan tape chu an hlûm lêt ta a, an rinloh zet hian chu inthahna ri chu a takin an hre ta a. Mi pakhat, a hming Anthony Inciarvano chu pisaah chuan lutin Dr. Phillips nêh chuan an inhnial chiam a. Silai a ri a. Tape chuan rilru lam thiam mi, nasa taka rûm chhuat laia thi thâwm chu a lo chhinchhiah a ni.

Chu inthahnaa thil râphtlâk te chu a chhinchhiah vek a. Tualthattu chuan a thil tih chu hriat chhuah miah loh tûrah a ngai a. A hnu chhui theih miah loh tûrin engkim fimkhur takin a kalsan a. Mahse hmuh loh hriatpuitu engkim sawi vek thei a lo awm reng mai a ni.”

He Kawhmuhnaah hian Pathian rorêlna hnuhnûng ber, mihringte chu an thiltih lehkhawua

chhinchhiah ang zêla an chung a ro a rêl hun tûr kan zir dâwn a ni. (Thupuan 20:12).

Chuvângin ngunthlûk taka zir chi a ni. An thil thalo tihte awaia thurûk vek ni tûra ngaite chuan mak an tithlâwt ang. Entîrnân

Chawlhkâr tina biak ina, tui taka rei tak ÷awngtaî thîn, mahni in lama a rûka nupuite a nih loh thleng thlenga sawisak chîngten thupuân thin tîphu zawk thei an la hmachhawn ang.

Amaherawhchu Isua



bêltute tân chuan rorêlna chu engvangin nge chanchin lâwmawm tak a nih pawh i zir nghal bawk ang.

1. RORELNA CHU HLAU MIAH LOVIN I  
HMACHHAWN THEI ANG.

Tuin nge khawvêl chungthu chu rêl ang?

**“Pain tuma thu a rêlsak ngai lo, thu zawng zawng Fapa a rêltîr ta zâwk.” Johana 5:22.**

Engtin nge Kraws chuan Krista chu kan rorêltu atân a lo buatsaih?

**“Pathian dawhtheihnaa hmanlai sualte haiderin a awm avâng khân, Pathianin ama felzia entîr nân Krista Isua chu, a thisena rinna avânga sual thupha chawinaah a ruat a; tunlaia a felzia entîr nân a ni, amah ngei chu mifel a nih theihna tûr leh, Isua ring apiang thiamchantîrtu a nih theihna tûrin.” Rom 3:25, 26.**

Krawsa an tan a thihsakna chuan Krista chu Rorêltu leh Thiamchantîrtu ngilnei a nih kawptîr thei a ni. Pathian tehna danglam ngai lo chu humin, misual simte chu a hum thei bawk a ni. Lei leh vâna lo thlîrtuten, engtin nge Roreltu chuan misualte chu sual lo anga a puan theih ang? tia an zawh chu, Krista chuan a kuta serte chu kâwkin a chhâng awlsam thei khawp ang. Sual man chungchâng rorêlna dik chu a taksain a tuar tawh a ni. [Zirlai12-nain Isua, Pathian Berâm No leh Pathian lalthutphah hmâa kan aiawhtuin, sual chungchâng chu chingfela, rorêlna atâna min buatsaih thu min kawhmmuh tawh.]

Kan nun sual thlâk nân Isua chuan engnge min tiam?

**“Amahah chuan Pathian felna kan nih theihna tûrin, sual rêng rêng hrelo chu Pathianin keimahni avângin sualah a siam a.” 2 Korin 5:21.**

Krista avângin Pathian chuan a thlâkna tûr thilmak tak a ti a ni. Rorêlna ðawngkam takin, kan nun soal hi Krista felna nuna thlâk a ni a, Isua nun, soal tello leh a thihna avângin Pathian chuan min ngaidam theiin soal ngai lo angin min pawm a ni. Chu ai maha la ropui zâwk chu kan sualte chu tuifinriat thûk takah phûmin soal kailo chhinchhiahna, (Kraws ngeiin ‘pawmtlâk thil Chiang,’ tia a lo puan chu) kan nun soal chhinchhiahna ânhche dawng thlâkna chu min pe a ni. Hei chiah hi a ni rorêlna Pathian hmâa ding tûra kan mamawh chu.

Vân chuan mitin chhinchhiahna a kawl a. (Thup. 20:12). Pathian chuan kan thil tih apiang a endik vek a. (1 Samuel 2:3). Kan thusawi leh ngaihtuahna rilru kal tlang tawh phawt chu a chhuichhuak vek a ni. (Mat 12:36). Hei hi a rûka an سوالna leh thil thalo an tihte, an mahni tibuai leh tawh lo tûra ngaihdân neituten thil ngaihnam lo tak a ni.

Amaherawhchu Pa hmaa min sawipui tûra Isua pawm tak taktute tân chuan thu ngaihnam a awm ve tho a ni. Krista thisen chuan kan soal zawng zawng a tlangfai a ni. (1 Johana 1:7). Isua chuan kan sualte a thaibova, (Tirhkohte 3:19). Kan nun hlui chhia aiah, Krista chuan a nun tha famkim kai dum nei lova chhinchhiah chu min pe a ni. (2 Korin 5:21).

Isua chu min sawipuitu leh kan Rorêltu, kan سوالna chingfel tûra a tlin dante i han bih teh ang [Mi tam tak ang bawka hisap lam i chak vak loh chuan, a dâwt then thumte hi chhiar thuak lang. A numberah buai lo la, he Zirlaia thu pawimawh dangte pawh i hre thiam tho vang.]

## 2. KRISTA CHU A HUNTAKAH A LO LANG.

Baptisma a chan khân Isua chu Thlarau Thianghlimin hriak a thih a.

"Isuan baptisma a chan veleh tui ata a chhuah ta nghal a. Tin, ngaiteh, vân chu inhawng a, Pathian Thlarau chu thuro anga lo chhukin, a chung a lo fu a hmu a. Ngaiteh, vân ațangin awin, 'Hei hi ka Fapa duh tak, ka lâwm êm êma chu a ni,' a ti a." Matthaia 3:16, 17.

Baptisma a chan tuma Thlarau Thianghlimin hriak a thih chiah chuan, a zirtırte pawhin, Messia a lo thlen tâk thu an puang ve a ni.

**"Messia kan hmu ta,' a ti a," (Krista tihna a ni). Johana 1:41.**

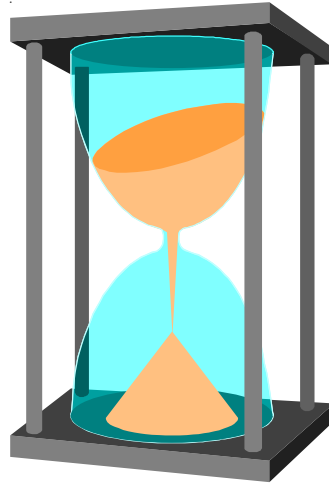
Hebrai tawnga Messia leh Grik tawnga Krista tih chu 'hriak thih' tihna an nih hriain a zirtırte chuan Krista chu a baptisma chan tım khân Thlarau Thianghlim chuan Messia angin hriak a thih a ni tih an hria a ni.

Isua zirtır, Luka chuan chu Messia anga hriak thih a nih kum chu, Tiberia Kaisara lal kum ațanga kum 15 in a lo chhinchhiah a. (Luka 3:1,2). Chu chu AD 27 hi a ni.

Messia lo kal tır hi chu Thuthlung Hlui zâwlnei tam takin an hrihlâwk a, Bible hrihlâwkna tihfamkim nân Krista chu a hun takah a lo lang a ni. Baptisma a chan zawh hnu lawkin Isua chuan heti hian a sawi a.

**"Hun chu a lo thleng ta a, Pathian ram pawh a lo hnai ta; sim ula chanchin Tã hi ring rawh u,' a ti zêl a." Marka 1:15.**

Kan Chhandamtu baptisma chan leh hriak an thih



hi a hun takah a thleng a. "Hun chu a lo thleng ta," Mahse Isua chuan eng hun ber hi nge a sawi? Isua chu a lo lang a hriak thih a nih hun chu a lo thleng ta. He khawvêla Isua lo kal hma kum 500 laiah khân Zâwlnei Daniela chuan Krista chu Messia anga a lo lan, hun tûr a lo sawi lâwk a.

Zâwlnei Daniela chuan Isua chu AD 27 hian lo lang a hriak thih ni tûrin a lo hrihl lâwk em?

**"Chuvângin Jerusalem tungding leh sa tha tûra thupêk a chhuah aţanga Hriakthiha, lal a lo awm thlengin hapta sarilh leh hapta sawmruk leh pahnihah a ni ang tih hrethiam ang che,' a ti a." Daniela 9:25.**

Hapta 7 leh hapta 62 chu hapta 69 a ni a, hapta khat zêlah ni 7 a awm avângin ni 483 tluk a ni. Mahse Bible hrihlâwknaah hian ni khat leh kum khat intluk a chhiar a ni. (Ezekiela 4:6 leh Numbers 14:34 en rawh). Tichuan ni 483 chuan kum 483 a tluk a ni. Daniela chuan, "Jerusalem tungdinga sa leh tûrin thupêk a chhuak ang a, tin, he thupêk aţanga kum 843-ah chiah Messia chu a lo lang ang,' tih a hrihl lâwk a ni.

Messia ni tûrin Isua chu hun ruatah chuan a lo lang chiah em? Artaxerxes chuan BC 457 khân Jerusalem sak that lehna tûr thupêk a chhuah a (Ezra 7:7-13, 21-26). Kum 483 hun chhông chu AD 27 khân a tâwp a. (Chu chu 457 BC + AD 27 = 484) Amaherawhchu kha thupêk kha kum 457 bulah ni loin kum laklawhah ţan a ni a, tin, Isua pawhin chutih chhông chuan baptisma a lo chang hman a, tichuan BC 457 leh AD 27 chu kum bul chiaha ţana, kum tâwp chiah a tâwptîr lovin a laklawh ve veah a man kai ta a ni. Chuvângin kum reizawng dik tak chu kum 483 a ni ang).

A hun ruat AD 27-ah chuan, Isua chu he thuchah "A hun a lo thleng ta," tih keng hian a lo lang a. Bible hrihlâwkna diktaka a thlenna chu Nazareth Isua hi Messia, Pathian chu kan khawvêlah tisain a lo lang tak

zet mai, tih hi a ni.

Engtikah nge Isua chuan thutiam chu a tih ngheh ang?

**“Hapta khat atân mi tam tak hnênah thuthlung nghet tak a siam ang,” Daniela 9:27.**

Kum khat leh nikhat intluka kan chhût chuan, kar khat hi kum sarìh a ni. Tichuan, kum sarìh chhûngin Isua chuan thuthlung chu “a tinghet” emaw thutiam mihring tâna a tiam chu AD 27 ațanga AD 34 chhûngin a tinghet ang. Adama leh Evi sual hnu lawk khân, Pathian chuan thuthlung a tiam a, chutah chuan mihringte chu an sual ata a mi tìrh hmangin a chhandam dâwn a ni. (Genesis 3:15). Krawsa Isua thihna chuan chu thuthlung tiam chu a tifamkim dâwn a ni.

Chawlhkâr sawmsarìhna lai takah chuan eng nge lo thleng tûr?

**“Hapta chanve (lai takah) chuan inthawinate leh thilhlante a tibâng ang” Daniela 9:27.**

Isua chu AD 31 chawlhkâr lai takah khenbeh a ni a. Krista a thih lai tak khân Pathian chuan biak in puan zâr chu a tithler ta vek a. .... hmun hnìhah a chhîp ațanga lei thlengin a thler ta a ni. (Mathaia 27:51). Inthawina Berâm (Isua chu Pathian Berâm No a nih entîrna) chu Puithiam kut ațangin a tal chhuak ta a ni. Hei hian Pathianin mihringte chu inthawi nâna ran hlan tûrin a duh tawh lo tih chhinchhiahna a ni.

Hrilhlâwkna chu a zìak ang taka a lo tihfamkim hnu chuan, Isua chuan inthawina atâna ran mamawhna chu a titâwp ta a ni (Daniala 9:27). Isua thih ațang khân mite chuan inthawina hmangin leh leia puithiamte hmang tawh lovin, amaherawhchu Messia, Pathian Berâm No leh kan Puithiam Lal zârah Pathian hnaih theihna an nei ta a ni.

## 3. SUALTE NGAHDAM HRIATCHIANNA

Daniela hrilhlâwknain a sawi dânin engvângin nge Isua chu a thih?

**“Hriakthiha chu tan chhum (tihlum)a ni ang. Mahse ama tân ni lovin,” Daniela 9:26.**

Krawsa A thih khân Isua chu 'sahtlâkin' a awm a, amaherawhchu ama tân ni lovin Isua chu thafamkimin a nung a, amah chauh hi sual lova he khawvêla awm chhun a ni. Ama tân a thi lova, a sual man tlâk nân a thi hek lo. Nang leh kei leh khawvêl pumpui sual man tlâk nân a ni.

Engtin nge Pathian chuan kan sual zawng zawng chu ngaidamin min pawm a ni tih ka hriat theih ang?

**“Chu chu Pathian felna, Isua Krista rin avâng a ring apiangte hnêna tihlana awm chu a ni. .... Mi zawng zawngin thil an tisual tawh vek a, Pathian ropuina an chang zo ta lo a ni. Nimahsela Isua Krista tlanna zârah Pathian chuan a khawngaihna avâng chauhvin a thlâwnin thiam a chantîr ta. Pathianin ani chu a thisen zâra rinna avângin sual thupha chawi nân a ruat a ni.” Rom 3:22-25.**

He châng a pawimawh bîkte chu: “Kan sual tawh vek a, amaherawhchu “Pathian khawngaihna” avângin, “Krista thisena tlenfaina ring a piangte chu, “Thiam changin kan awm” tih hi an ni.

Thiam chantir kan nih hian thil pahnih a thleng thin.

1. *Pathian chuan thiamchangah min pawm:* Kan tân ma sualte kha a tlâk tawh avângin.

2. *Pathian chuan mifelah min chhiar:* “Felna chu Isua Krista rin avângin Pathian hnên aţangin kan dawng.”

Pathianin himna famkim min pêk dân chu Krista rin avâng a thiam min chantîr hi a ni. Isua chuan, “Nangni thawkrim leh phurrit phur zawng zawng te u, ka hnênah



lo kal ula keiman ka lo chawltîr ang che u.” (Matthaia 11:28). Keini ðat tuma tâlhah, mahni chaknaa tlin tumte hian, Kristan a khawngaihnaa min pawmnaah chauh hahchawlhna kan hmu ang. Tun hmalam sual kaidumin a tih hah leh tlin lohna leh zahna avânga na tuarte hian krawsa a bân phara min lo pawmtu Isua Kristaah chauh hian thlamuanna leh ðanlenna chu kan hmu thei a ni.

#### 4. RORELNA TAN HUN

Daniela hrilhlâwkna ropui bung riat leh bung kua hi inhnaih tak a ni.

Daniela bung riatah chuan angelin nakin huna thil lo thleng tûr lem ropui tak zâwlnei chu a hmuhtîr a. Chutah chuan Daniela chuan hêngte hi a hmu a (i) Berâmpa (ii) Kêlpa leh (iii) kitê tak tê, Medo-Persia te, Greek leh Rom ram aiawh te hi (Daniela 8:1-12,20-26).

He hrilhlâwknaa palina hi engnge ni?

**“Nitîn inthawina chungchânga inlârna chu engtikah nge a lo famkim ang? Anî chuan ka hnênah heti hian a sawi a. 'Zîng leh tlai sânghnih leh zathum (ni 2300 KJV) a duh ang, chu mi hnuah biakbûk chu serhhran leh (tihthianghlim KJV) a ni ang.’”**

**Daniela 8:13,14.**

Hrilhlâwknaa ni 2300 awmzia chu vântirhkohvin a hrilhfiah hmain Daniela chu a thi dang a, bung riatna chu hrilhfiahna awm lovin a tâwp ta a ni. Mahse a



hnuah vântirhkoh chu lo lang lehin heti hian a sawi ta a:

**“Vârna leh hriatthiamna pe tûr che in ka lokal a ni..... chuvâng chuan thuchah chu ngaihtuah la, inlârna chu hrethiam rawh. Bawhchhiatna tikim tûr te, sualna titâwp tur te, khawlohna thianfai tûr te , . . .i mite leh i khawpui thianghlim tân hapta sawm sarîh ruat a ni e.” Daniela 9:22-24.**

Ni 2,300 hi kum 2,300 tih nêh thuhmuna ngaihtueih a ni. Ezekiela 4:6 chuan hrilhlâwkna thuah chuan ni khat leh kum khat in tlukin a sawi a. Chutiang zêl chuan kâr sawmsarih pawh kum 490-ah a pawm theih ta zêl a ni. Kum 490 hi kum 2,300 chhûng a mi a ni a, Persia lalin, Jerusalem chu tungdinga sa t̄ha leh tûra thu pêk ințanna kum BC 457-a ințan a ni.

Kum 2,300 ațang hian kum 490 kan paih t̄hen chuan kum 1810 a la chuang a. Kum 1810 a t̄awp chuan AD 34 a lo ni reng tawh a. Tichuan kum 1810 chu AD 34 a kan belh chuan kum 1844 a ni ta a.

## 5. VANA BIAK BUK TIHFAL - RORELNA

Vântirhkoh chuan, kum 2,300 t̄awpna kum 1844-ah chuan, “Vâna biak bûk chu tihthianghlim (tihfai KJV) a ni ang,” tiin Daniela chu a hrilh a. Chu mi awmzia chu eng nge ni?

AD 70-a Rom hovin Jerusalema temple an tihchhiat ațang khân, Pathian mite chuan leiah hian biak in an nei ta lova, Kum 1844 a biak bûk tlenfai tûr pawh chu vâna biak bûk chu, chu mi anpuia leia an lo sak t̄hîn, kha a ni.

Chuti nise, vâna biak buk tihfai chu eng nge a awmzia? Hman lai Israelte chuan leia biak bûk tlenfai hi Yom Kippur. *Inremna Ni* tiin an vuah a. Hei hi Hebrai ho tâna Rorelna nî a ni.

Zirlai 12-naa kan hmuh ang khân, biakbûka Kristan

kan tâna thil a tihte chuan kawngnihin awmzia an nei a. 1) Biakbûk hmun thianghlina nitin inthawina leh serh leh sângten Puithiam rawng bâwlna ten an kawh leh, 2) Kumtin inthawina leh serh leh sângte biak bûk pindan pahnihna, Hmun Thianghlim Bera puithiam lalin a hlantein an kawh te (Leviticus 16:23; Hebrai 9:1-5).

Lei temple-ah chuan, nitin miten an soal thupha an chawiin, an ran an talh thisen chu inthawina maichâm chung sîr lamah chuan an theh a, a sa erawh chu Hmun Thianghlimah chuan Puithiamte chuan an ei ta a ni (Lev. 4 leh 6). Tichuan entîrnain nitin soal thupha chawi tawhte chu biak bûkah chuan an rawn kenga chutah chuan an chhekkhâwm thîn a ni.

Kum tin, Tlanna Nîah chuan biakbûk chu soal thupha chawi tawh zawng zawngte lakah an tîfai thîn a ni (Lev. 16). He tihfaina atân hian, Puithiam Lal chuan kêl serh thianghlim hmangin inthawina bîk a hlân a. A thisen chu hmun thianghlim berah chuan kengin Thuthlunna Bâwm, tlanna chhîn hnuai Thusawmpêk awmna hmaah chuan a hlân a ni. Puithiam Lal chuan he tihfaina thisen hi tlanna khuhnaah chuan a theh a, chu chuan, Isua min chhandam tûra lokal tûr thisen chuan kan soal man a tlâk tih a entîr a ni. Puithiam Lal chuan soal thuphachawi tawh entîrnain biakbûk ata chu a la leh a, kêl dang pakhat lu chungah a ngat a, chu chu thlalêrah thi tûrin an hruai bo ta a ni (Leveticus 16:20-22).

He inthawina, kum tin tlanna nî ami hian biak bûk chu soal aţangin a tîngfai a ni. Hemi nî hi mite chuan rorêlna nîah an ruat a, a chhan chu tupawh an soal thupha chawia an sualte tâna Pathian ngaihdamna dil duh lotute chu misuala ngaih niin Pathian mite lak aţangin an hnâwl (tîhrang) thîn (Leveticus 23:29).

Entîrnâna puithiamin kum khata vawikhat a lo tih thîn hi Krista chuan Puithiam Lalber niin vawikhatah a

zo vek a ni (Hebrai 9:6-12). Rorêlna ni ropuiah chuan an chhandamtua Isua pawmtute sual thupha chawi tawhte chu biak bûk aţang chuan a la bo vek a. Kei ni pawhin kan sualte thupha kan chawi tawh chuan chatuan atân kan sual chhinchhiahna pawh chu, chu mi kum chuan a thaibo vek dâwn a ni (Tirhkohte 3:19). Hei hi Rorêlna kum 1844-a lo inţan chu a ni.

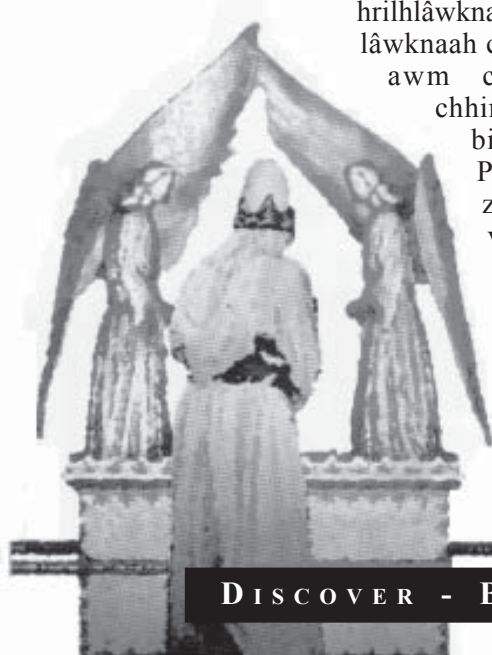
Kum 1844 rorêlna chu vâna a lo ţan chuan Isua chuan vâna biak buk tihfai hna chu a ţan ta a, rorêl hona thuchah chu khawvêlah an lo puang ţan ta a ni. (Thupuan 14:6,7) Nakinah Zirlai dangin he thuchah bîk hi chu a la hrilhfiâh ang che.

#### 6. ROREL HUNA I CHANCHIN ZIAKNA HMACHHAWNIN.

Kum 1844 aţang khân, Daniela bung 8 leh 9 hrilhîawknain a sawi angin Krista chu rorêl îawknah chuan rorêltu a ni ta a, chuta a awm chhûng chuan kan sual chhinchhiahnate thai bo leh vâna biakbûk tihfai hnâ a thawk a. Petera pawhin a lekhathawn a ziak lai hian he mi hun hi a thîr ve a ni.

**“Chuvângin in sualte thai bo a nih theih nân sim ula, hawi kîr leh rawh u, chutichuan Lalpa hnên ata harh hunte a lo thleng thei ang.” Tirhkohte 3:19.**

He rorêl îawkna, tuna kal mêk hian mitthi tawh  
z a w n g



zawngte leh la dam zawng zawngte zîngah tunge Isua lo kal huna chhandam tûrte tiin an chanchin chhinchhiahna a chhui a. Kan Rorêltu a nihnain, Isua chuan mifelte sual zawng zawng chu vâna an sual chhinchhiahna aţang chuan zînga ţiauchhûm an ral leh ţhîn ang hian a thai bo vek a ni. (Isa 44:22) Chhak leh thlang a inhlat ang hian chatuan atân a paihbo daih a ni. (Sâm 103:12). Lei leh vân aţang hian an bo vek ang. (Thup 21:1).

I dam chhûnga i nun chhinchhiahna chu tih danglam leh theihna hun remchang nei ta la, engte nge i tihdanglam ang? Thil buaithlâk ţhenkhatte chu tihdanglam vat i duh ngei ang. Thil lawmawm tak chu Krista chuan keini tihdanglam theih aia nasa daihin min tihdanglam sak a ni. Rorêlnaa i hming a lo lan ve leh, Krista chu i aia dîng leh i chhandamtua i pawm phawt chuan i chanchin ziakna hmachhawn chu a awl ngawt ang.

Isua chuan mifelte chu vâna an kal hun chuan an sual leh dâwn tawh miah lo tih a hre chiang a, chuvâng chuan sual lanna rêng rêng chu an nun ata a tifai vek a, a nun famkim chuan a thlaksak a ni. Tin, leiah an lâwmmante pe tûrin a lo kal leh ang.

**“Ngai teh, ka lo kal thuai dâwn e, mitin an thiltih ang zêla pêk tûrin ka lâwmmann ka hnênah a awm a. Nunna thing chungah chuan thu an neih theihna tûr leh kawngkâah khuua an luh theihna tûra insufate chu an eng a thawl e.” Thupuan 22:12, 14.**

Isua lo kal tâwk tûrin i inpeih tawh em? A nih loh leh, thil eng emaw a laka zeprûk emaw, sual la puan loh emaw a awm em? Nangmah sawipuitu nih duh êm êm tu nê chuan tlang tak leh tihtak zeta inzawmna i nei em?

Rorêlna hriatchhuahna hian tun hmaa kan sual thupha chawi kan lo theihnghilh tawhte lungngai takin

min hai chhuahtîr tûr a ni lo. Amaherawhchu engkim Pathian hma dawhkâna dah chhuak tûrin min nawr zâwk tûr a ni. Engmah a rûk awm loin inbumna pawh awm loin.

**“Kan sualte thupha kan chawi chuan kan sualte ngaidam tûr leh kan fel lohna zawng zawng tlengfai tûrin amah chu a rinawmin a fel a ni.” 1 Johana 1:9.**

Thuphachawi awmzia chu thiamloh min chantîrna apianga Pathian nêin inremna hi a ni. Kan hmachhawn duh tûr a ni. A ngaihdamna chu kan pawm a, a chakna leh zahngaihna kan mamwhzia kan lantîr.

Potsdam-a Lung in pakhat a tlawh tumin, Lal Frederic Williams I chuan ngaihdam dilna thu tam tak a ngai thla a, an vai chuan roreltu tan bik nei, hriatpuitu thu dik sawi ngam lo leh ukil rilru tak hmang peihlote avânga tâng an nih thu chhechham meuvhin an lo sawi a. Tân in pindan tin aţang chuan pawisawi lo tântîr an nih thu hlirin an lo chhun zawm a.

Pindan pakhata tâng erawh chuan engmah sawi ve tûr reng a hre lova, mak tizet hian “Nang pawh pawisawi lo i nih ka ring,” tiin Federic chuan fiamthu hian a han tikhum deuh ngat a.

“Ni awzawng lo ve, Lalpa, ka dik lova, ka chungka thleng zawng zawngte hi ka phu khawp mai,” tiin mitâng chuan a chhâng ta a.

Lal chuan a vêngtu lam chu hawiin ring zet hian, “Lo kal la, he misual hian hêng sualna nei lo, mi thate hi a tihsual vek hmam chhuah vat rawh,” a ti a.

Rorêlna atân chuan eng angin nge kan inbuatsaih le? Krista lo kal tûr tân hian eng angin nge kan inbuatsaih? Thudik tlang taka sawichhuak maiin. He thil hmuhchhuah ropui tak hi tlang taka pawm maiin Ka sual man thihna hi ka phu a, amaherawhchu midangin ka ai a awh a, chu

mi chuan ngaihdamna ropui tak min pe a ni.

Tûnah hian intukluhna siamin, eng pawh lo thleng sela, Isua nêna in inkâr chu hmuh phâka vawnga rinawm leh thinlunga tihtak zetna nêna vawng reng ang che.

7. NUNNA KAWNG RUAK ATANGA  
CHHANCHHUAH.

Pathian Berâm No leh an Puithaim Lal a nih angin Isua chuan kan tunhma nunte khuh bovin hmalam hunṭha min pe mai ni lovin, kan tun hun pawh hi a tichak a ni.

**“In thlahtute pêk chhawn, in awmdân engkhaw ni lawi lo lak ata chu, thil chhethei, tangka leh rangkachaka tlan in ni lova, berâm no hmâlhem lo leh bawlhhlawh kailo thisen ang a Krista thisen hlu chuan tlan in ni zâwk tih in hre si a.”** 1 Petera 1:18, 19.

Kan nun kawng eng khaw lawi lo aṭangin min tlan a. Isua chuan thu ṭha hman theihna thinlung tihdanglam min tiam a:

**“In chungah tuifîm ka theh ang a, in lo thianghlim ang a, in bawlhhlawhna zawng zawng leh in milim lak ata ka tlengfai ang che u. Thinlung thar ka pe ang che u a, in chhûngah thlarau thar ka dah ang; in tisa ata thinlung, lung anga sak chu ka la bo ang a, thinlung tisa anga nêma ka pe zâwk ang che u.”** Ezekiela 36:25, 26.

Kan vai hian chîn dân (nun dân) hlui sual tih châknate hi kan buaipui vek a. Amaherawhchu Pathian chuan chung thil hlui châknate chu a thar châkna zâwka thlâk sak min tiam a ni.

**“Tin, in chhûngah ka thlarau ka dah ang a, ka dân siamah ka lantîr ang che u a, ka thupêkte chu in zâwm ang.”** Châng 27.

Thlarau lam zinna kawnga i kal ʔan phat aʔangin hêng thutiamte hi hrereng ang che Pathian duh dân chu i chhûngah thu takin luang lut se, A thlarau Thianghlimin i nun ruak aʔang chuan a chhanchhuak ang che.

*Kan Pa duhtak vâna mi, ama tân nilo, kan sual tâna thi Isua min pêk avângin i chungah kan lâwm e. Min sawipuitu atân te, Kan Puithiam Lalber atân te leh kan Rorêltu atâna amah chu i ruat avângin i chungah kan lâwm e. Ani ngei chu beiseina leh rinna min petu chu a ni! Tûnah pawh hian ka nunna hi Isua kut ngeia kawltîr ka duh a. Nun ruak aʔanga min chhanchhuaka, vâram ka chang theihna tura min buatsaih tûra a thutiam chu ka pawm a ni. Chung zawng zawngte chu Isua hmingin ka dil e. Amen.*

---

Published by Mizo Conference of Seventh-day Adventists  
Seventh-day Tlâng, P.O. Box 097, Aizâwl 796 001, Mizoram.

DISCOVER - BIBLE RÂLCHHÂN